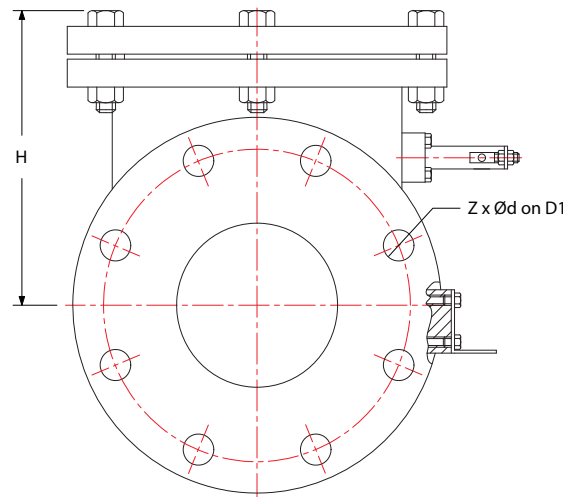


NO	NAME	MATERIAL
1	BODY	ASTM A536 65-45-12
2	BODY SEAT RING	ASTM B62
3	DISC SEAT RING	EPDM
4	DISC	ASTM A536 65-45-12
5	WASHER	ASTM F593 GROUP 1 304
6	LOCKING NUT	ASTM F593 GROUP 1 304
7	ARM	ASTM A536 65-45-12
8	HINGE PIN	ASTM A276 304
9	PLUG	ASTM A276 304
10	PACKING	EPDM
11	SEAL	GRAPHITE
12	BOLTS	ASTM F593 GROUP 1 304
13	NUTS	ASTM F593 GROUP 1 304
14	COVER	ASTM A536 65-45-12
15	GLAND	ASTM A536 65-45-12
16	LEVER	ASTM A36
17	WEIGHT	ASTM A536 65-45-12
18	SPRING	ASTM A313
19	SPRING BRACKET	ASTM A36
20	SPRING STUD	ASTM F593 GROUP 1 304

**Design Specification**  
 Design confirm to AWWA C508  
 Connections confirm to ASME B16.1  
 Face to face confirm to ASME B16.10  
 Pressure Rating: Class 150/Class 250

SIZE	L	H	ØD	ØD1	b	Z	Ød
2	8.00	5.4	6.0	4.75	0.62	4	0.750
2.5	8.50	5.8	7.0	5.50	0.68		
3	9.50	6.3	7.5	6.00	0.75		
4	11.50	7.1	9.0	7.50	0.94	8	0.875
5	13.00	8.0	10.0	8.50	0.94		
6	14.00	8.8	11.0	9.50	1.00		
8	19.50	10.2	13.5	11.75	1.12	12	1.000
10	24.50	11.4	16.0	14.25	1.18		
12	27.50	12.8	19.0	17.00	1.25		
14	31.00	16.7	21.0	18.75	1.38	16	1.125
16	36.00	17.5	23.5	21.25	1.44		
18	38.00	18.9	25.0	22.75	1.56		
20	42.00	20.7	27.5	25.00	1.68	20	1.250
24	48.00	23.9	32.0	29.50	1.87		



2" - 24" C508 Resilient Seat Swing Check Valve (FLxFL)



DWG NO. B24RSWACV

